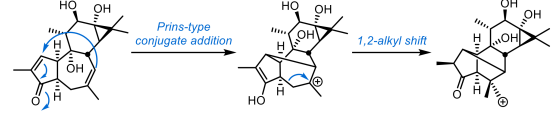


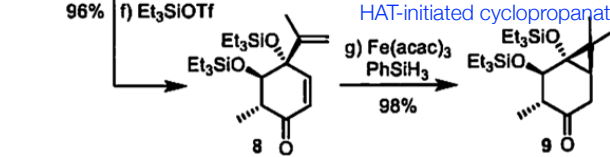
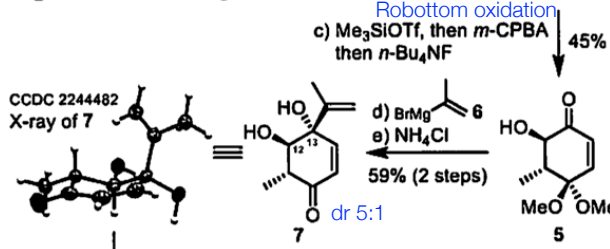
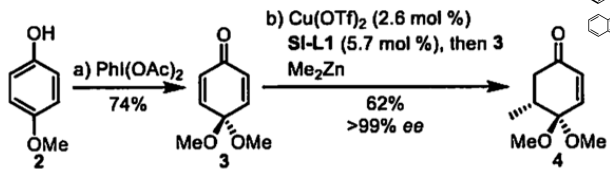
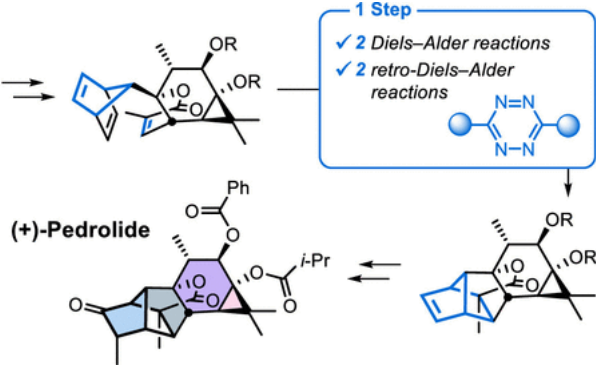
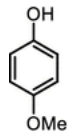
Enantioselective Total Synthesis of (+)-Pedrolide:
 Marlene Fadel and Erick M. Carreira*
 Cite this: J. Am. Chem. Soc. 2023, 145, 15, 8332–8337

biosynthesis

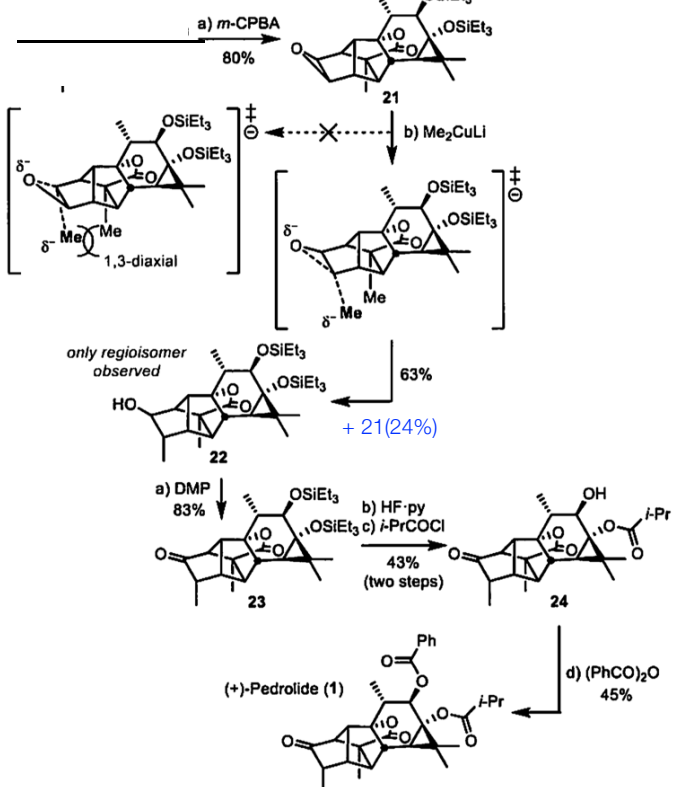
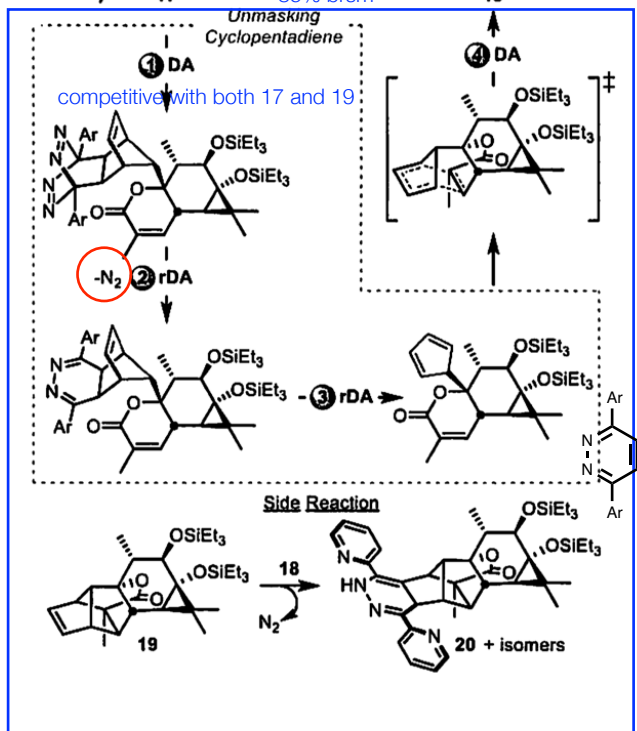
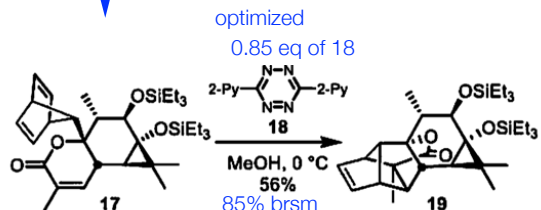
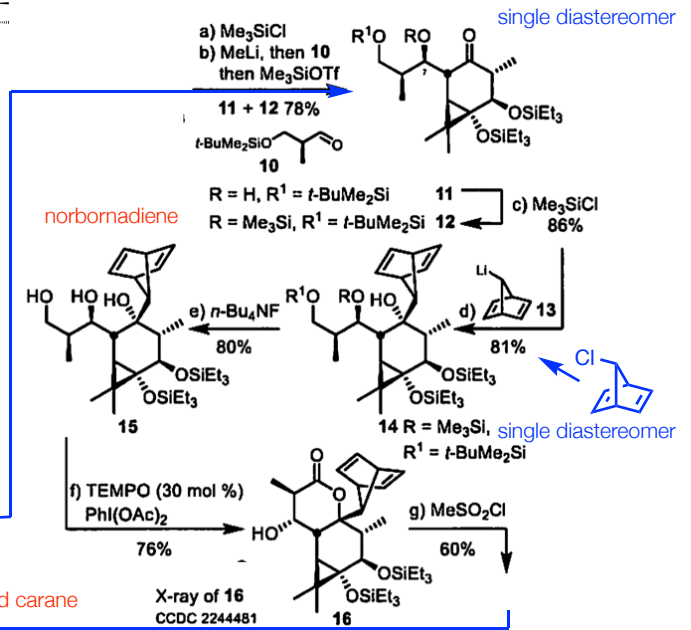


tiglane scaffold

5-5-6-6 carbon skeleton embedded bicyclo[2,2,1]heptane



densely functionalized carane



(+)-Pedrolide (1)